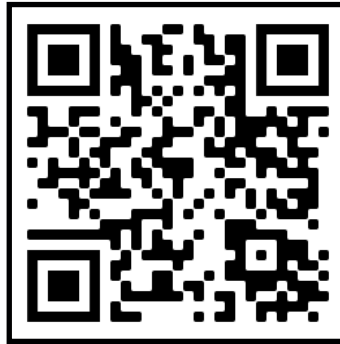


Thank you for choosing Unit garage!

We have selected the best waterproof materials available: sturdy TPU with Hypalon details, waterproof zippers, magnetic buckles and maximum attention to detail.

These bags will become the perfect companion for your next adventure.

For detailed info scan the QR code:

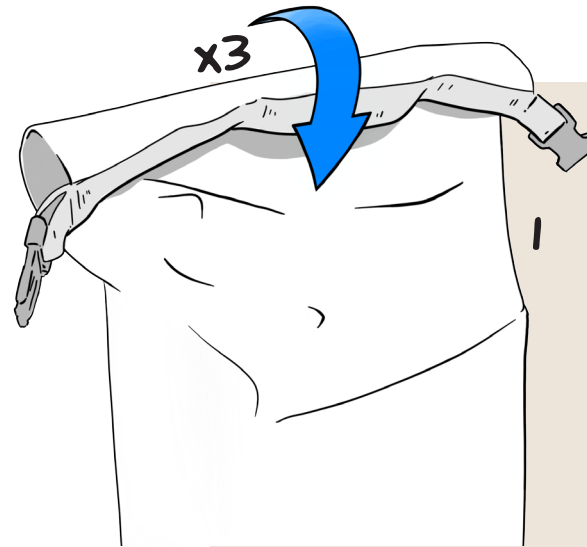


Grazie per aver scelto Unit garage!

Abbiamo selezionato i migliori materiali impermeabili: robusto TPU con dettagli in Hypalon, cerniere waterproof, fibbie magnetiche e massima cura dei particolari.

Queste borse diventeranno il compagno perfetto per la tua prossima avventura.

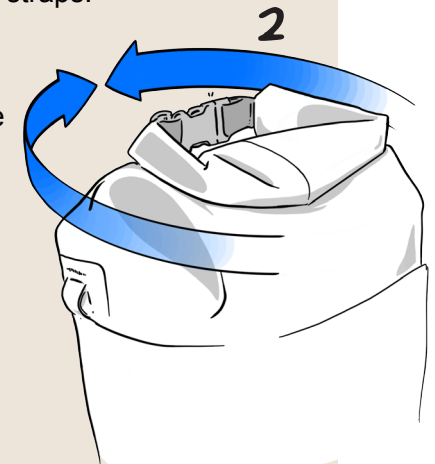
Per info dettagliate inquadra il QR code:



1\_ Close the top of the bag using the magnetic guides. Roll the edge of the pannier three times.

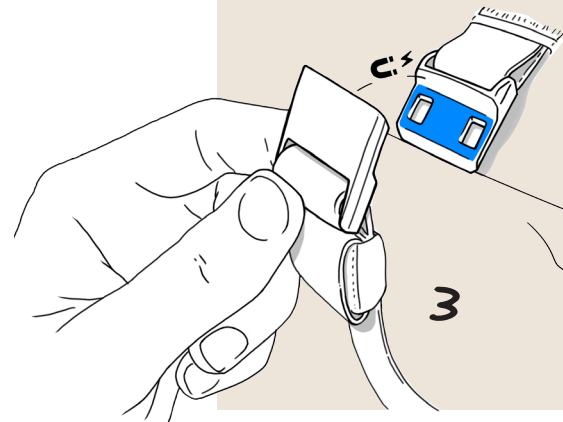
2\_ Fix the buckles on both ends of the bag.

3\_ Fix the two magnetic buckles on the top of the bag and tighten the straps.

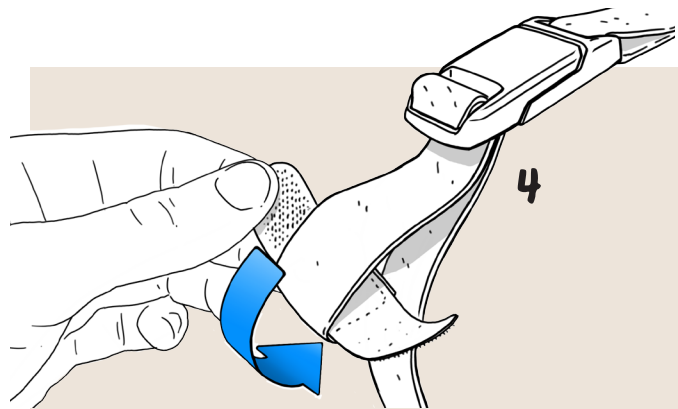


1\_ Chiudere la parte superiore della borsa utilizzando le guide magnetiche. Arrotolare tre volte il bordo della borsa.

2\_ Fissare le fibbie sulle due estremità della borsa.

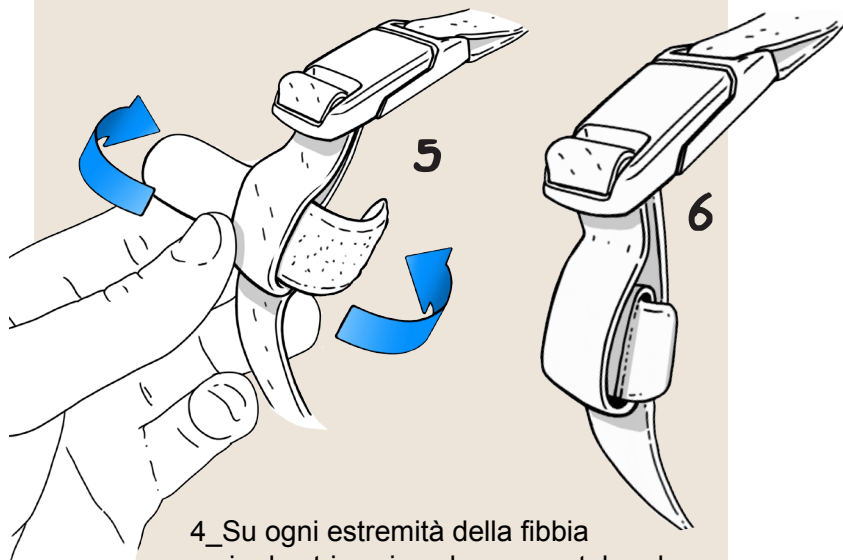


3\_ Fissare le due fibbie magnetiche sulla parte superiore della borsa e stringere le cinghie.



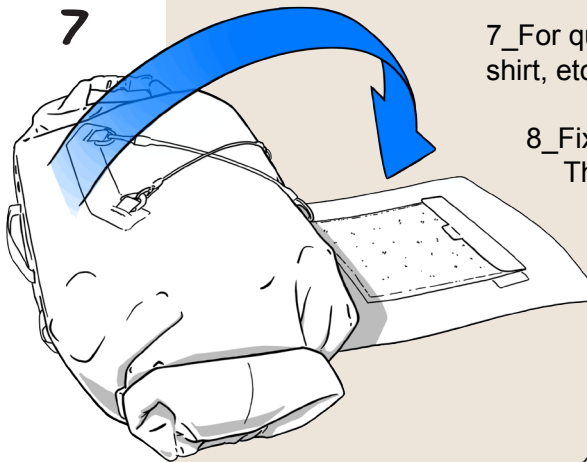
4\_ On each end of a buckle open the velcro strips, and roll up the strap.

5-6\_ Once rolled up, fix the ends to the strap using the velcro strips.



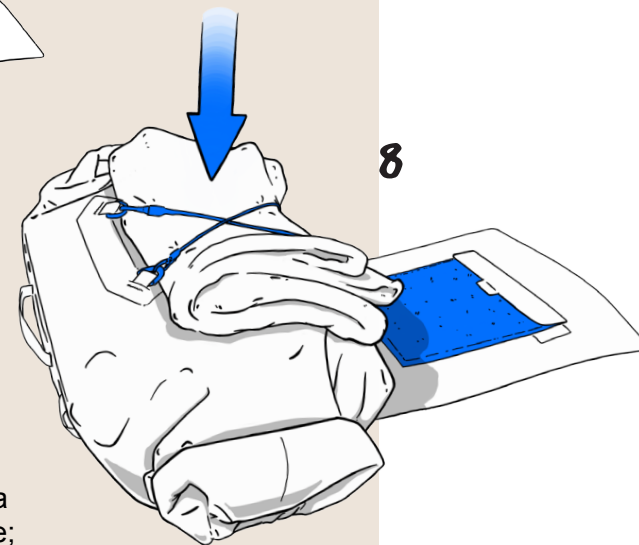
4\_ Su ogni estremità della fibbia aprire le strisce in velcro e arrotolare la cinghia.

5-6\_ Una volta arrotolata, fissare l'estremità al cinturino utilizzando le strisce in velcro.



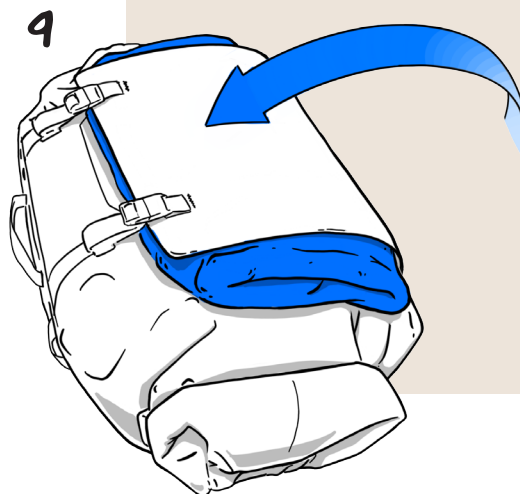
7\_ For quick storage of a jacket, shirt, etc; open the central flap.

8\_ Fix using the 2 elastic straps. The inside of the flap has an anti-slip net.



9\_ Close the 2 magnetic buckles to secure the flap and tighten the straps.

7\_ Per riporre rapidamente una giacca, una T-shirt o altre cose; aprire la patta centrale.



8\_ Fissare il bagaglio utilizzando le 2 cinghie elastiche. L'interno della patta ha una rete antiscivolo.

9\_ Chiudere le 2 fibbie magnetiche per fissare la patta e stringere le cinghie.